



AI FOR DEVELOPMENT CENTER

**INTEGRATING AI & IOT IN
TECHNOLOGY FOR DEVELOPMENT**



MONTREAL, QUEBEC

INTRODUCTION: About ZMQ Global



- ❑ ZMQ Global is an international non-profit organization based in Montreal, Quebec since 2019. It is the first T4D non-profit from Global South, India created in 1998.
- ❑ ZMQ designs, develops and implements practical technology-based tools and solutions to empower communities and organizations.
- ❑ ZMQ work with communities for building sustainable solutions Health, DEI, Education, Livelihood and Globally issues of Sustainable Development.



ZMQ T4D MODEL

T4D

Over 30 System Change Models,
Products & Solutions on critical issues
like Healthcare, Education and
Livelihood

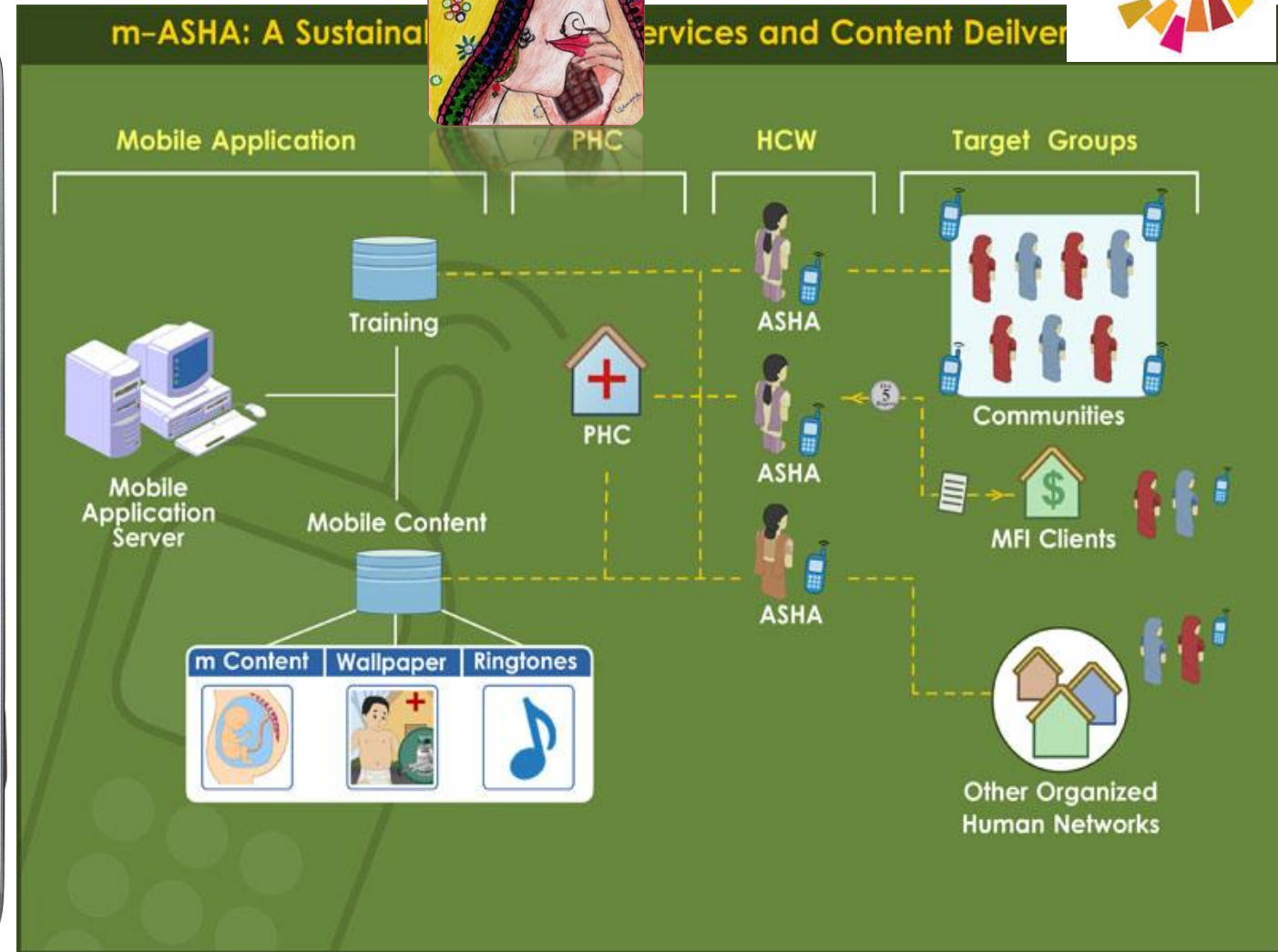
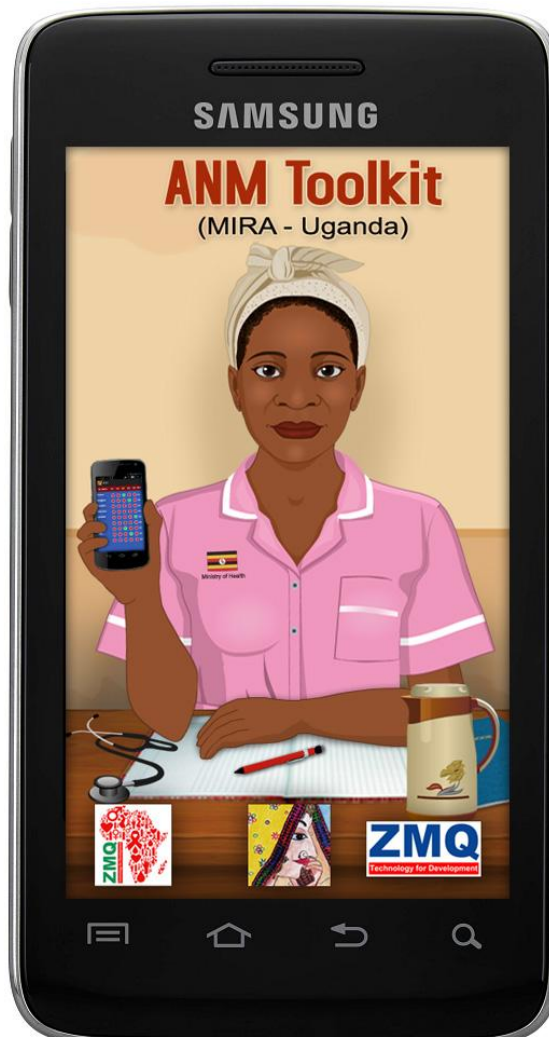


C4D

Behaviour Change Communication
Tools and Initiatives on issues like
MCH, SRHR, HIV, TB, WASH,
Sanitation, Water, Diversity etc.



ZMQ: EXAMPLE #1 OF T4D 'MIRA CHANNEL'



A LAST-MILE **mHEALTH SOLUTION** FOR MOTHER AND CHILD

ZMQ: EXAMPLE #2 OF T4D 'AAJEEVIKA CONNECT'



DISTRIBUTED LIVWELIHOOD CLASSROOM: - SKILLS AND TRAINING OF RURAL SWOMEN

ZMQ: **EXAMPLE #3** OF T4D 'ACTS FOR TB'



❑ **Level I : ACTIVE GROUND BUILDING**

Learning Tools/ Digital Stories/ Games/ ACSM

❑ **Level II : ACTIVE CASE FINDING**

Door to Door / Screening / Testing / Referrals

❑ **Level III : ACTIVE PATIENT COMPLIANCE**

Patient tools for Evidence based Reporting - VOT

❑ **Level IV : COMMUNITY-LED SUPERVISION**

Group Active Compliance/ Family ACTS / Monitoring

❑ **Level V : ACTIVE TREATMENT MANAGEMENT**

OUTB Platform/DMCs/e-TB Units/**NIKSHAY** Integration

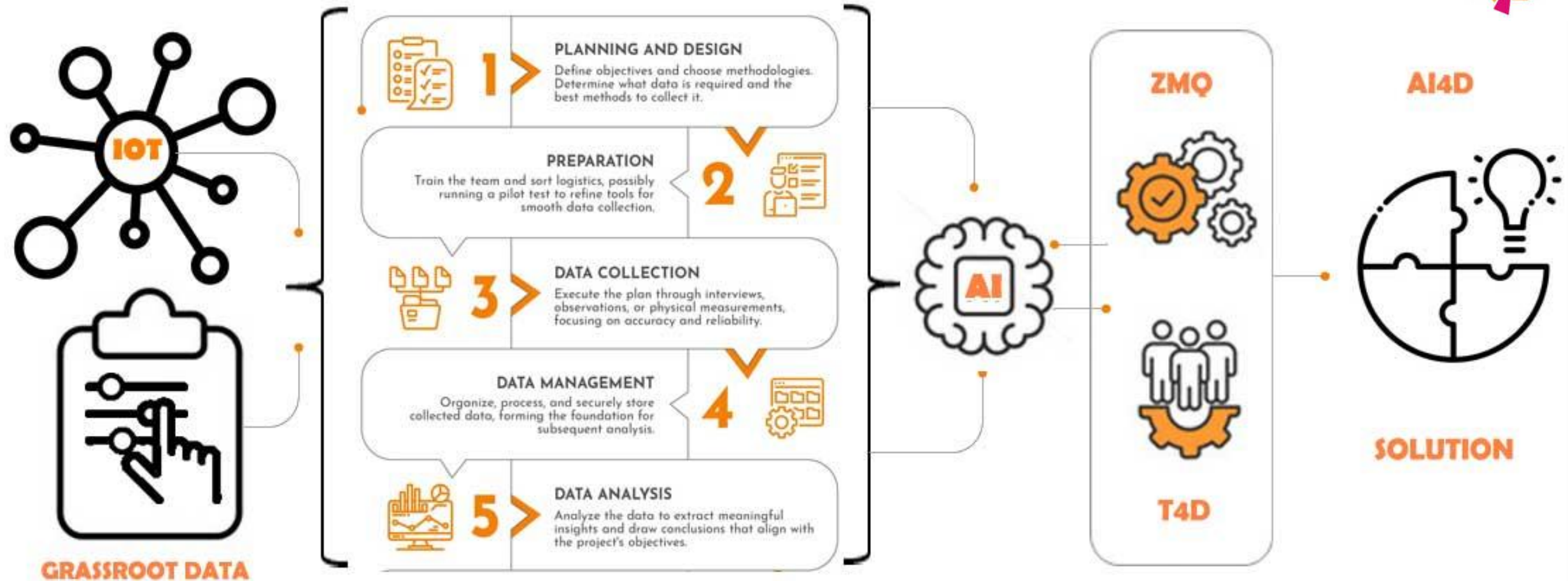
❑ **Level VI : ACTIVE GROUND ASSESSMENT**

Spatio-Temp Epd. Model/Integrated Intervention Design System/e-Predict

ACTS: A HOLISTIC MODEL TO COMBAT TB & INFECTIOUS DISEASES

ZMQ: AI4DEV INTEGRATION FOR DEVELOPMENT ALIGNED WITH SDGs



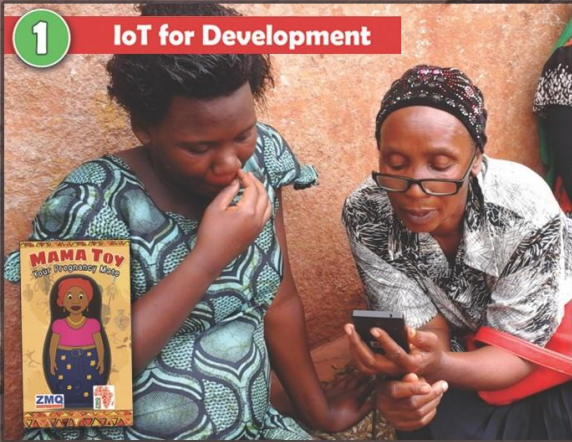


The emergence of ‘*Digital Twins*’ – Artificial Intelligence (AI) and Internet of Things (IoT), provides a new opportunity to build robust and auto-improving development solutions.

ZMQ's Triple Impact Model


1

IoT for Development

A photograph showing two women in a rural setting. One woman is holding a smartphone, and the other is looking at it. A book titled "MAMA TOY" is visible in the foreground.


2

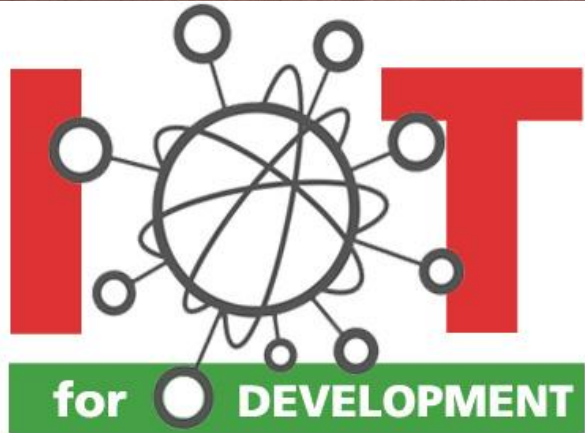
AI for Development

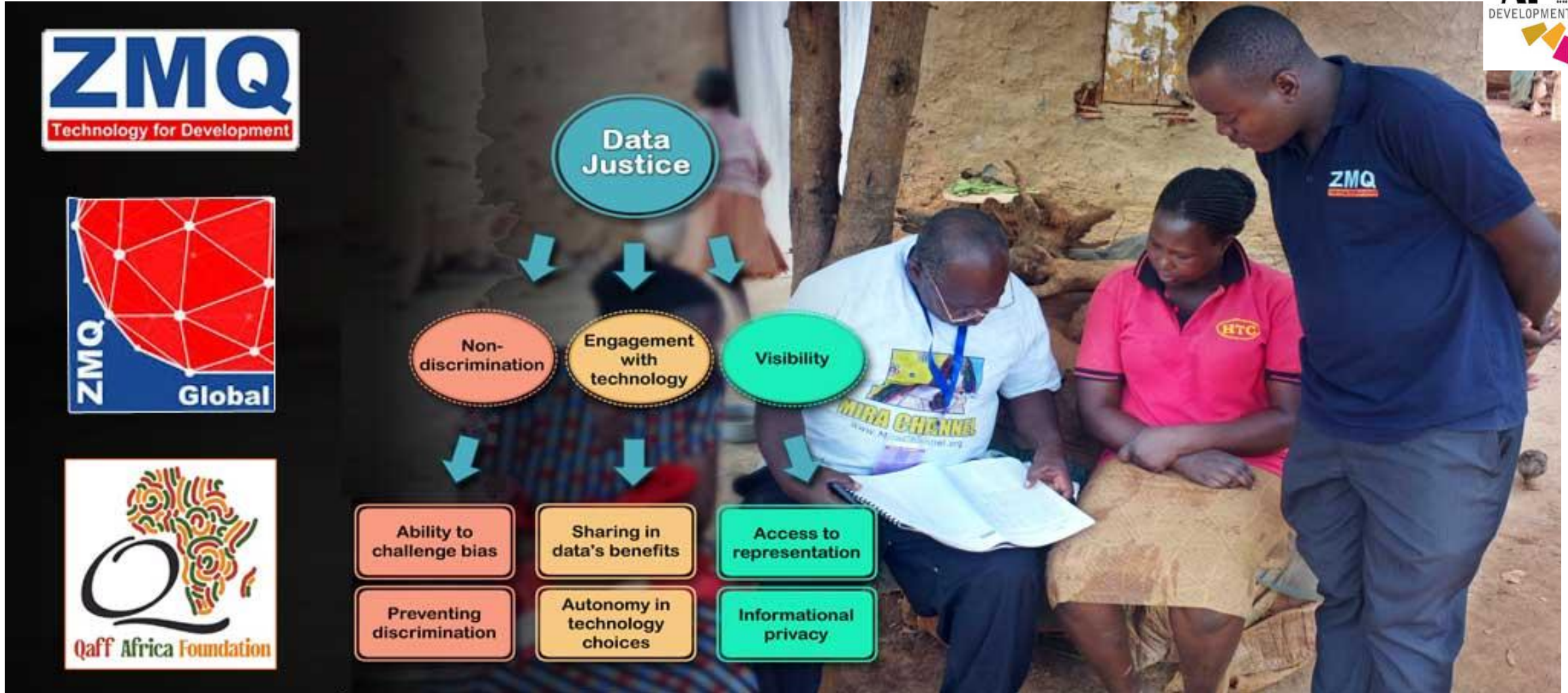
A photograph of a group of women sitting on a bench. One woman is holding a baby. A tablet in the foreground displays an image of a person's face.

3

Research 4 Development

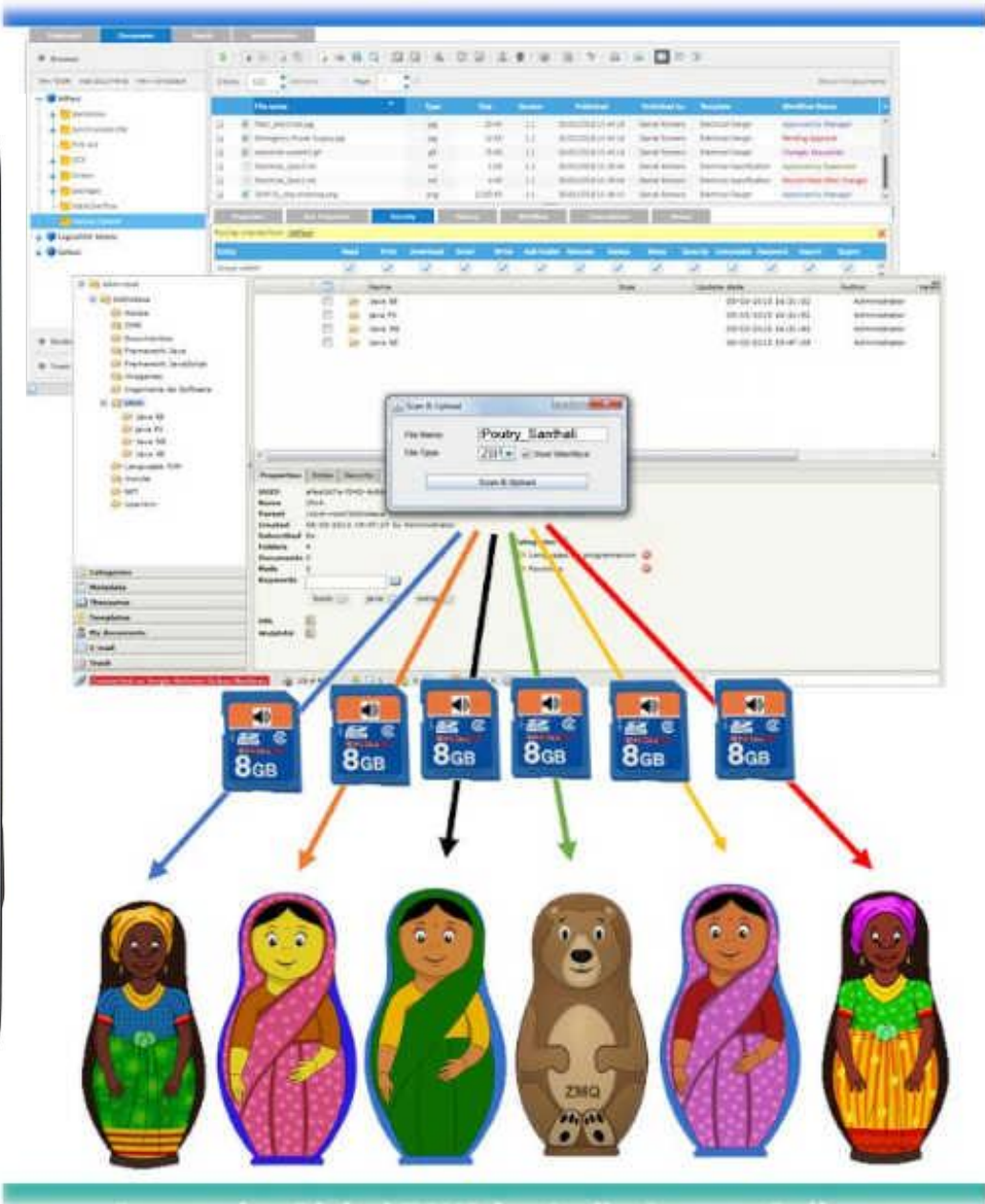
A photograph of a group of people sitting around a table outdoors. A tablet in the foreground displays a data chart with various colored dots.





DATA JUSTICE: Data should make visible community-driven needs, challenges, and strengths; be representative of the community; and treat it in ways that promote self-determination of the communities.

ZMQ: AI4DEV -TOY BOTS IN MIRA PROJECT



ZMQ: AI4DEV – aGENDER ULTRA SOUND



ZMQ: AI4DEV – AUDIOGENICS FOR CHILDHOOD PNEUMONIA (<6 Months)



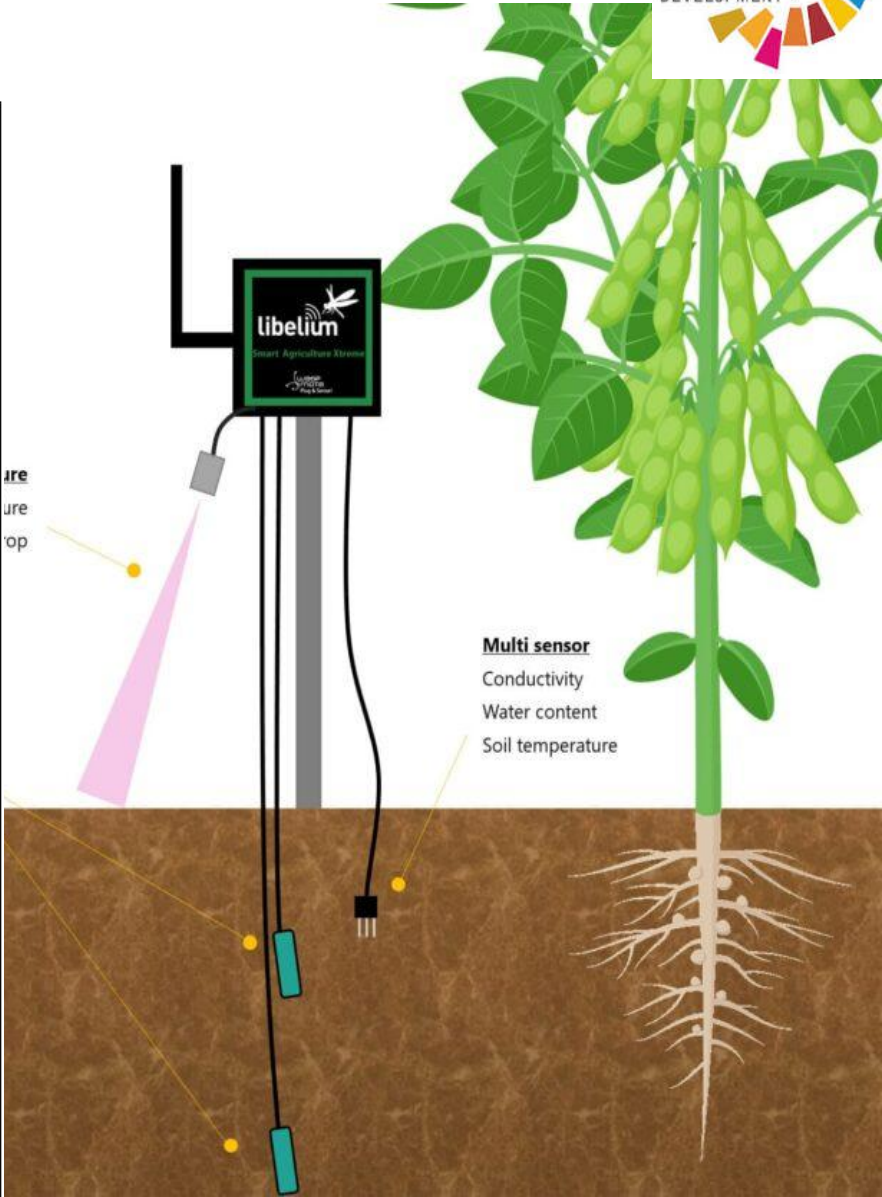
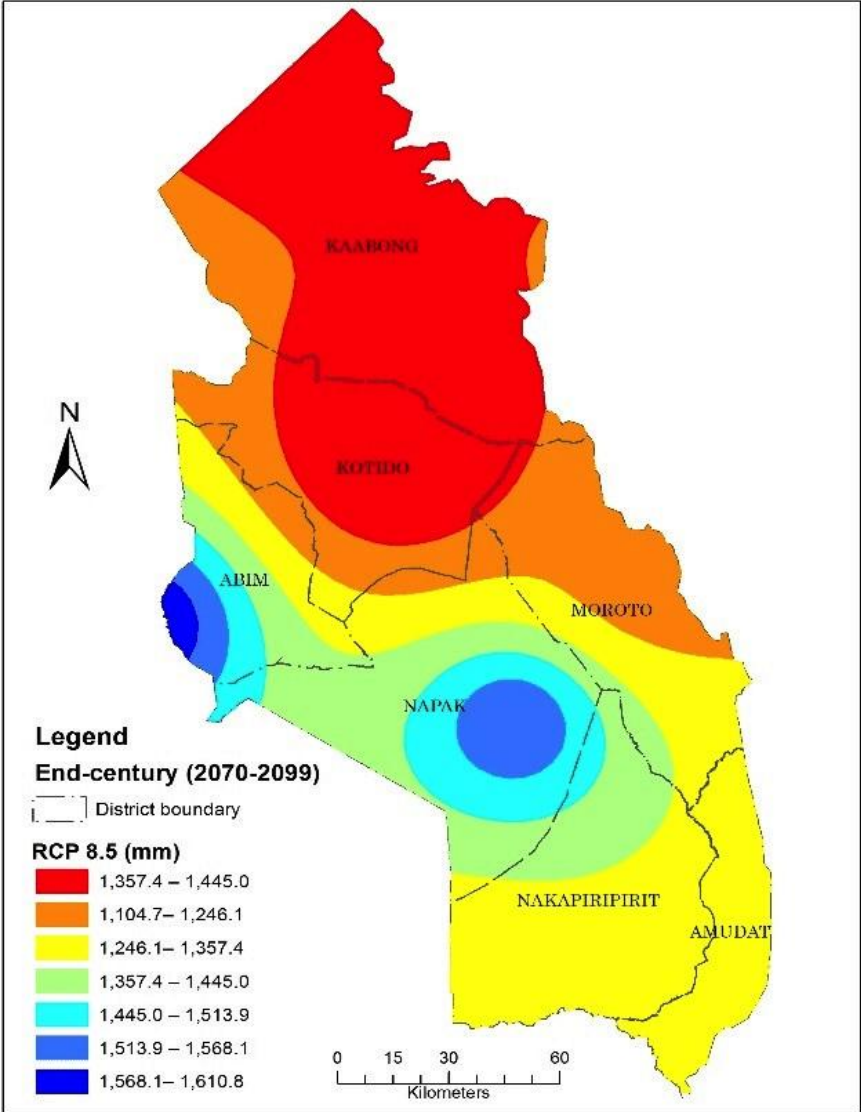
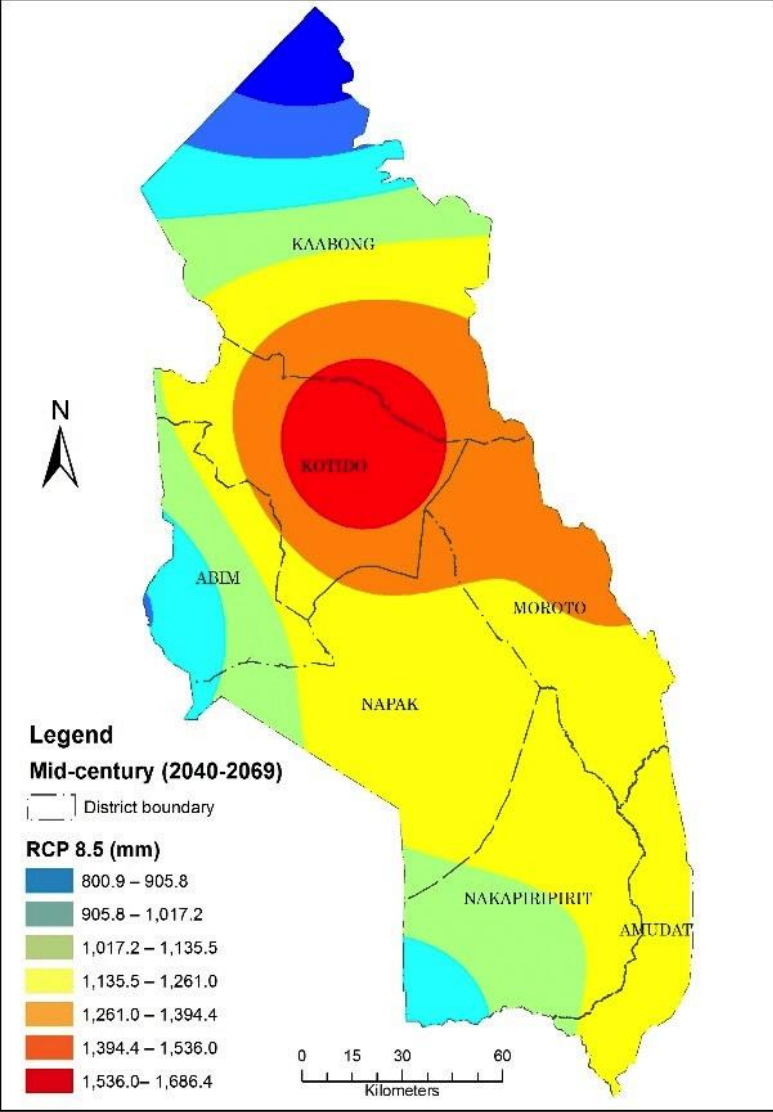


- Using Transgender & their informant network for Beneficiary Mapping
- Using Transgender's core skills of Storytelling for BCC
- 'Sakhee' App for New Born Registration and Reminder/recall
- Integrated Talking Comics in 'Sakhee' App for awareness building
- Mainstreaming Transgender and their network for routine immunization
- Direct benefit transferred to Transgender and their network



An estimated 26% of the world's urban population now resides in slums, which provide the ideal conditions for the spread of communicable diseases, such as Pulmonary diseases, Cholera, Influenza, Measles and others. Consequently, such slums serve both as incubators and reservoirs for potential outbreaks.

ZMQ: AI4DEV – CLIMATEXAGRI – KARAMOJE in UGANDA





THANK YOU!

Subhi Quraishi,

Director Technology for Development,
ZMQ Global

Montreal, QC, Canada

